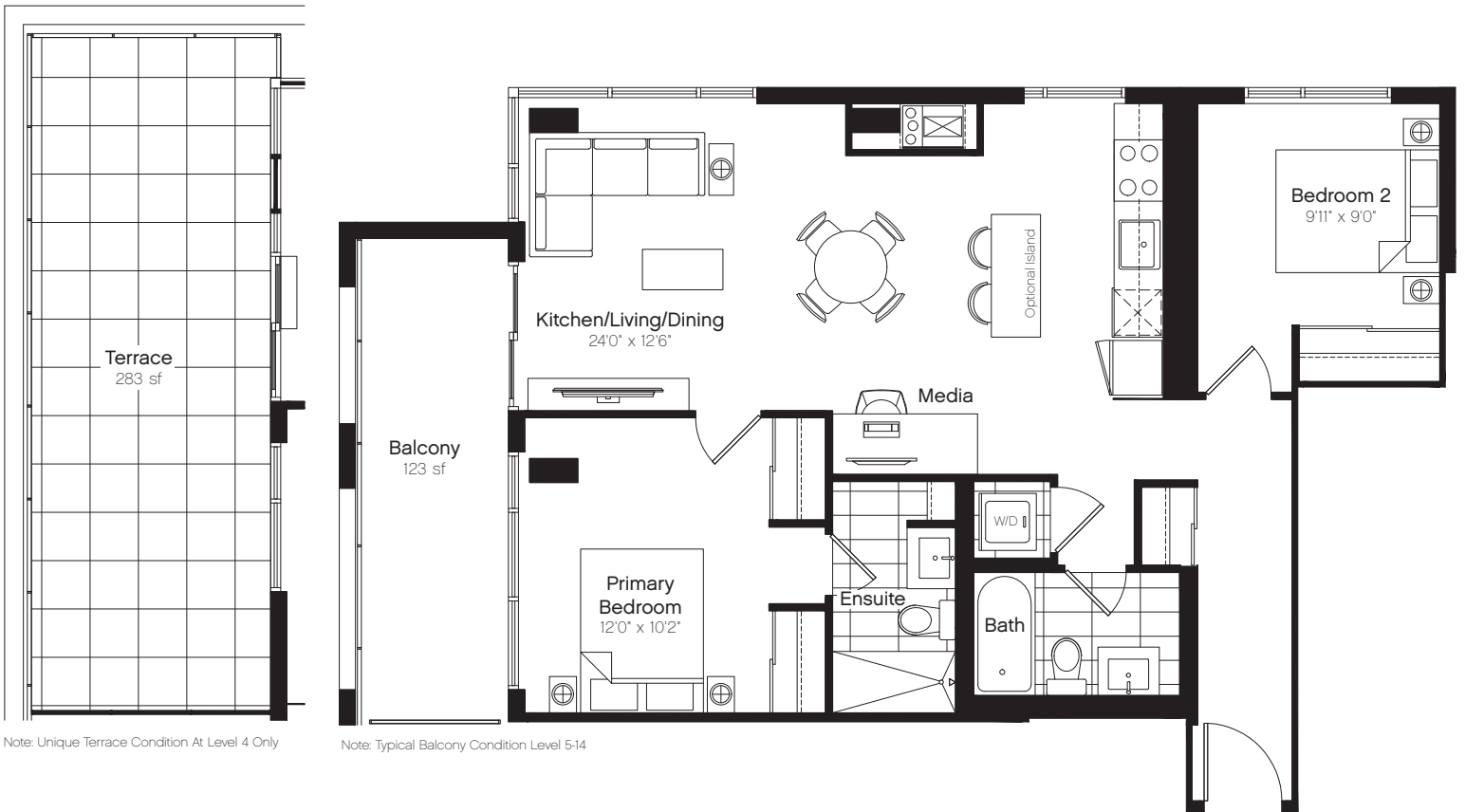




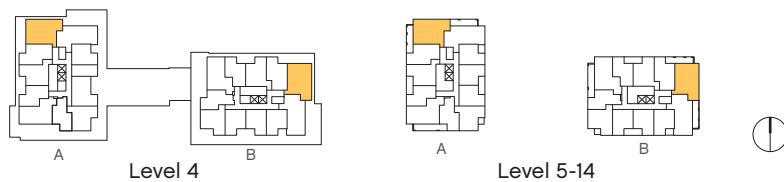
Type 2J

2 Bed, 2 Bath
 Interior: 923 sf
 Total: 1,046-1,206 sf



Note: Unique Terrace Condition At Level 4 Only

Note: Typical Balcony Condition Level 5-14



Prices and specifications are subject to change without notice. All areas and stated room dimensions are approximate and actual living area will vary from floor area stated. Floor area is measured in accordance with ONWHP bulletin #22. Vendor may substitute materials provided such materials are of quality equal to or better than the material provided for in the plans and specifications at the Vendor's discretion. Decorative and upgraded items displayed in marketing materials and/or the sales office are for display purposes only and are not included in the purchase price. The ceiling height of the unit will be approximately 9', measured from the upper surface of the concrete floor slab to the underside of the concrete ceiling slab or ceiling structure, provided however that various areas of the dwelling unit may contain (or be subject to) ceiling bulkheads and/or dropped ceilings, in order to facilitate the installation of structural components, mechanical systems and/or ductwork, and accordingly in those areas of the unit that are subject to said bulkheads and/or dropped ceilings the overall ceiling height will be reduced accordingly. E.&O.E.